

# The Opera House

735 Queen St. East, Toronto, Ontario, Canada

[TheOperaHouseToronto.com](http://TheOperaHouseToronto.com)



## INDEX

<b>INDEX</b>	<b>1</b>
<b>GENERAL INFORMATION</b>	<b>2</b>
<b>PARKING</b>	<b>3-4</b>
<b>AUDIO</b>	<b>5</b>
<b>LIGHTING</b>	<b>6-8</b>
<b>STAGE/RIGGING/BARRICADE</b>	<b>9</b>
<b>VIDEO/OTHER VENUE INFO</b>	<b>10</b>
<b>HOTELS/ACCOMMODATIONS</b>	<b>11</b>
<b>FLOOR PLANS</b>	<b>12</b>
<b>IMMIGRATION</b>	<b>13</b>

## GENERAL INFORMATION

### Venue Contact

Athena Ellinas-Towers (Booker/Venue Manager)

Office: (416) 466-0313 Cell: (416) 828-2980

Email: [athena@theoperahousetoronto.com](mailto:athena@theoperahousetoronto.com)

Fax: (416) 466-0917

### Capacity

Total Capacity - 1072

Sellable Capacity - 900

Main Floor Standing - 660

Balcony Seated/Standing - 285

Dressing Rooms - 42

Grill/Patio: 25 indoor - 60 outdoor

### Wi-Fi

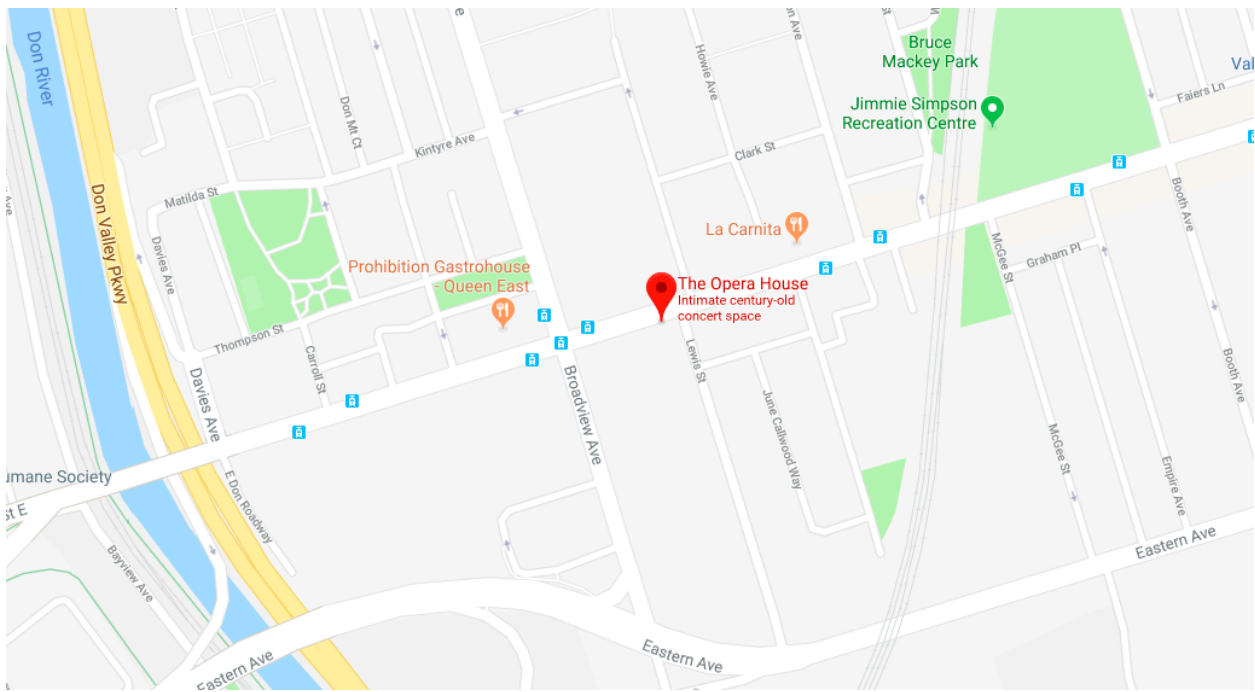
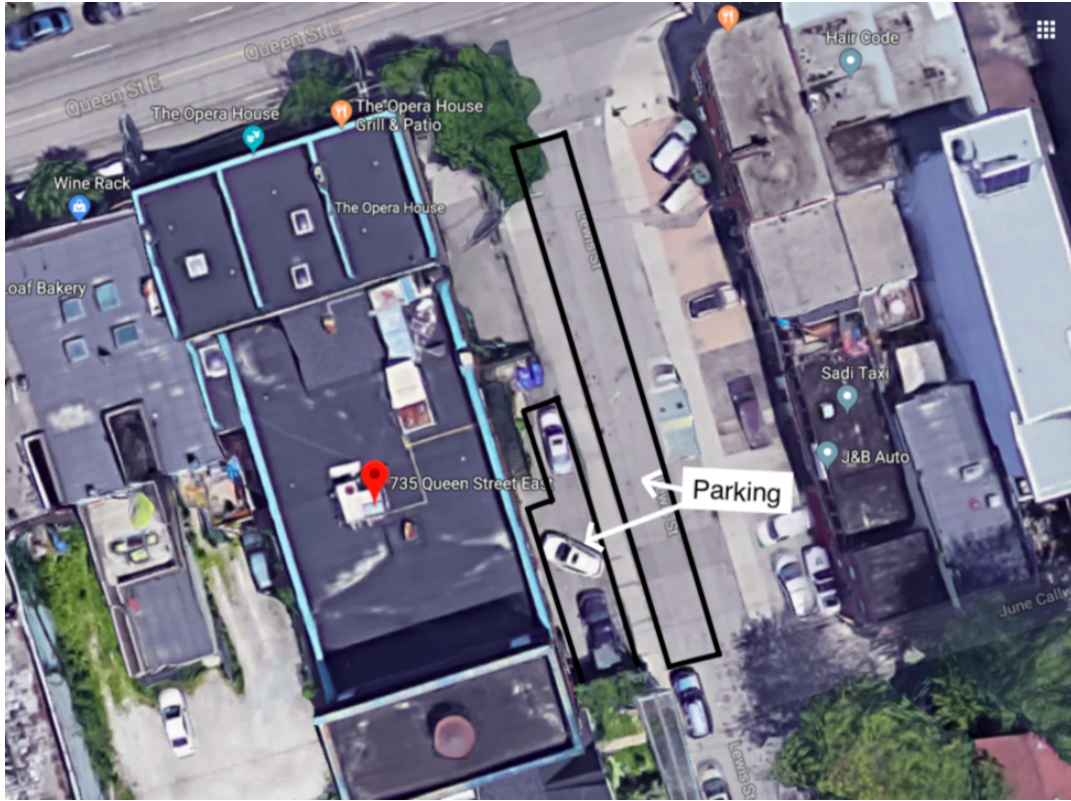
Wi-Fi available upon request.

## PARKING

Parking for buses/trailers is on the West side of Lewis St directly next to the club (Motorcoach Parking zone). We can accommodate 2 buses with trailers **nose to nose** within our allotted space (maps on next page). Lewis is a one way street running North. Access to it can be made from Eastern Ave or through an alley off Saulter St (1 block East) if you're in a smaller vehicle.

We can also accommodate 3 smaller vehicles on the concrete landing pad. We have 2 connections for shore power and buses are required to run off it. We're in a residential neighbourhood and get noise complaints from running generators through the night.





# AUDIO

## PA

Adamson CS10 Line array  
Adamson CS10 Line Array Tops - 10 per side (flown)  
Adamson CS119 Subs - 6 per side (ground stacked)  
Adamson CS7p's - (front fill/delays/reference monitors)  
Fully integrated with Adamson AI Software

## FOH

Avid SC48  
40 channel Clair copper split snake  
12 channel return

## Monitors

Avid SC48  
8 Crest CA-9 amps (8 for monitor mixes)  
8 WNSS 212 Bi-Amped concert series monitors  
2 Adamson CS10p Tops and CS119 Subs for Sidefill

## Microphones

1x Shure Beta 91  
2x Shure Beta 52  
5x Shure Beta 56  
8x Shure SM 58  
8x Shure SM 57  
5x Shure SM 94  
4x Sennheiser e604  
2x Sennheiser MD 421  
2x Sennheiser E609  
3x Audio Technica ATM 25  
2x Rode M5

Mic kit changes, these are  
all constants though. 15+  
active and passive DI's  
as well

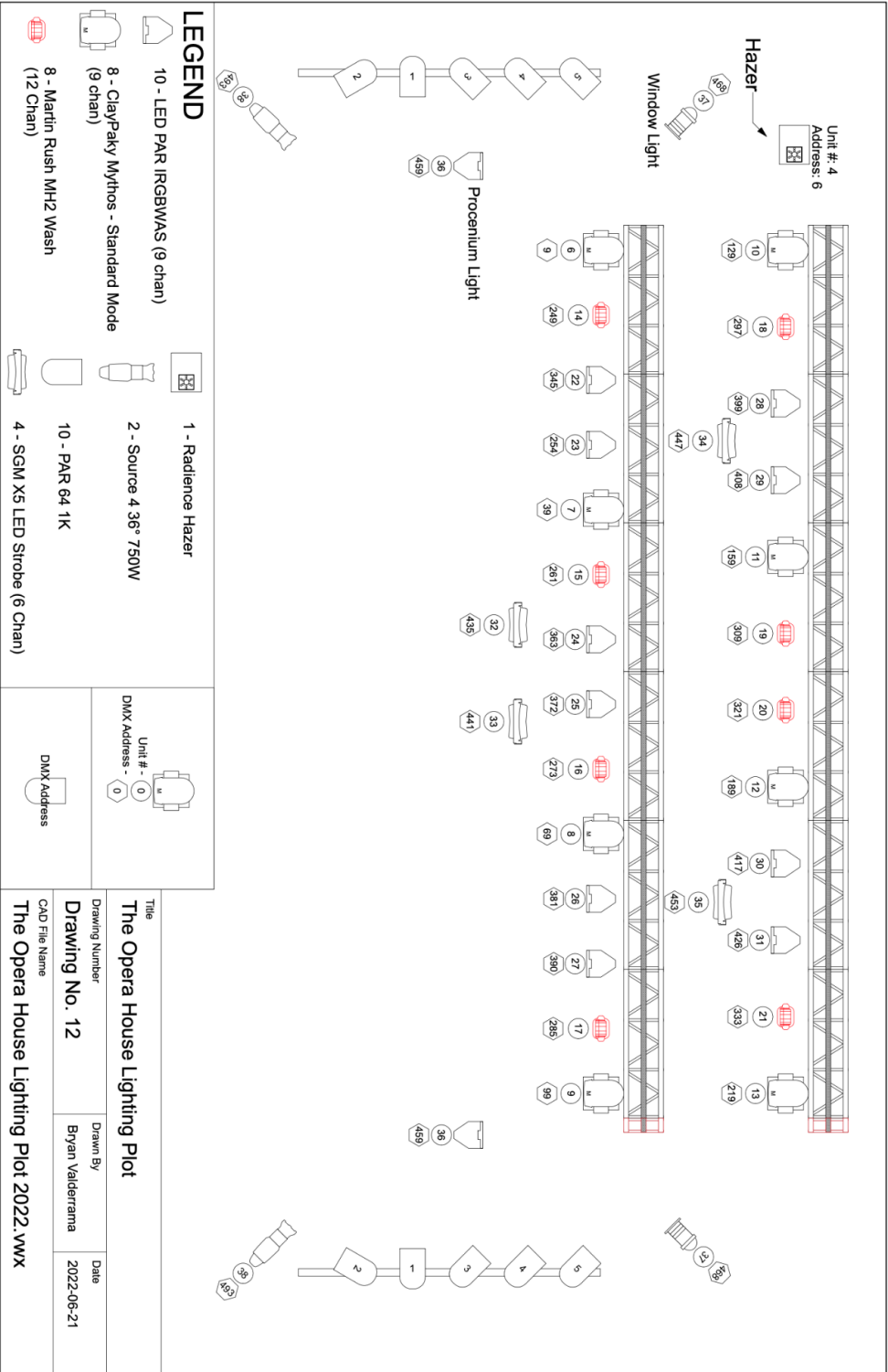
# LIGHTING

## The Opera House Lighting Patch

Fixture ID	Fixture Name	Fixture Type	Universe	Address
1	Balcony Wash	Dimmer	2	1
2	Audience Wash	Dimmer	2	2
3	PAR Can Front Wash	Dimmer	2	3
4	Hazer	Radiance Hazer	2	6
5	Mirror Ball	Dimmer	2	8
6	Mythos 1	ClayPaky Mythos - Standard	2	9
7	Mythos 2	ClayPaky Mythos - Standard	2	39
8	Mythos 3	ClayPaky Mythos - Standard	2	69
9	Mythos 4	ClayPaky Mythos - Standard	2	99
10	Mythos 5	ClayPaky Mythos - Standard	2	129
11	Mythos 6	ClayPaky Mythos - Standard	2	159
12	Mythos 7	ClayPaky Mythos - Standard	2	189
13	Mythos 8	ClayPaky Mythos - Standard	2	219
14	Rush 1	Martin Rush MH 2 Wash	2	249
15	Rush 2	Martin Rush MH 2 Wash	2	261
16	Rush 3	Martin Rush MH 2 Wash	2	273
17	Rush 4	Martin Rush MH 2 Wash	2	285
18	Rush 5	Martin Rush MH 2 Wash	2	297
19	Rush 6	Martin Rush MH 2 Wash	2	309
20	Rush 7	Martin Rush MH 2 Wash	2	321
21	Rush 8	Martin Rush MH 2 Wash	2	333
22	LED PAR 1	IRGBWAS LED PAR Can	2	345
23	LED PAR 2	IRGBWAS LED PAR Can	2	354
24	LED PAR 3	IRGBWAS LED PAR Can	2	363
25	LED PAR 4	IRGBWAS LED PAR Can	2	372
26	LED PAR 5	IRGBWAS LED PAR Can	2	381
27	LED PAR 6	IRGBWAS LED PAR Can	2	390
28	LED PAR 7	IRGBWAS LED PAR Can	2	399
29	LED PAR 8	IRGBWAS LED PAR Can	2	408
30	LED PAR 9	IRGBWAS LED PAR Can	2	417
31	LED PAR 10	IRGBWAS LED PAR Can	2	426
32	Strobe 1	SGM X-5 (6 Channel Mode)	2	435
33	Strobe 2	SGM X-5 (6 Channel Mode)	2	441
34	Strobe 3	SGM X-5 (6 Channel Mode)	2	447
35	Strobe 4	SGM X-5 (6 Channel Mode)	2	453
36	Procenium Arch	IRGBWAS LED PAR Can	2	259
37	Window Lights	Generic RGB - 3 Channel	2	268
38	Leko Front Wash	Dimmer	2	480



Lighting Plot



## Console

- Jands Vista S3
- 2x DMX guest lines available
- We do **NOT** have a FOH to Stage CAT5 Snake

## Lighting Rig

12x Generic LED PAR IRGBWAS  
8x Clay Paky Mythos  
8x Martin Rush MH 2 Wash  
6x PAR 64 1K  
4x SGM X-5 LED Strobe  
2x Source 4 36° 750W Lekos  
1x Radiance Hazer

**\*\*Please note that we do NOT allow any OIL BASED hazer fluid in the venue as it will set off our fire alarms. Water based fluids ONLY.**

## POWER

1x 100 amp 3 phase cam lock SL for LX (guest power)  
1x 100 amp 3 phase cam lock SL for Audio (guest power)  
2x 50 amp single phase (shore power)  
4x 15 amp U-Ground outlets USR (lighting power)  
1x 100 amp 3 phase distro USL (audio stage power)



## STAGE

Stage width (wing to wing) - 44ft

Stage height - 4ft

Width of proscenium - 27ft

Height of proscenium - 18.2ft

Depth to stage skirt - 23ft

Height to stage ceiling - 50ft

Height to fly grid - 40ft

Steel ramp to stage - 3.5ft

Stage skirt to FOH - 35ft

Stage skirt to back of house - 70ft

Ceiling height - 30ft

Room width - 45ft

### Risers

- 2x 4'x8'x16" Risers (8'x8'x16" when put together)

## RIGGING

4x Tour Rig 1/3 Ton Motors

30ft of 20" A Truss Upstage

25ft of 20" A Truss Downstage

6x Flyable pipes (only accessible to house staff/please advance if needed)

1x 30ft Back drop bar flown from USL Corner

2x 15ft house pipes on SL and SR walls accessible with lift (not provided)

4x 1 Ton Points Downstage of proscenium accessible with lift (not provided)

## BARRICADE

30ft available upon request

House does not provide pit security (Additional charge for use of barricade)

## VIDEO

### Screen

- 1x 24x13.5ft Da-Lite fast fold screen flown on an upstage fly pipe

### Projector

- **Christie LX650**
- Brightness: 6,500 lumens
- Video Modes: 720p, 1080i, etc.
- Inputs: DVI, VGA

**IMPORTANT: Additional charge for use of house video**

## OTHER VENUE INFO

### Bars

- 3 Located on the main floor and one balcony bar
- This is a fully licensed venue and all outside alcohol must be bought under license.

### Dressing Rooms

- 2 Dressing rooms located under the stage
- 1 Shared washroom with shower
- 1 Production office (for tour use)
- 1 Make up room

## Accessibility

This is an accessible venue with specific seating areas available, ramps and with a main floor accessible washroom

## HOTELS/ACCOMMODATIONS

Preferred rates are available for our clients at...

Broadview Hotel (1 block west of venue)

106 Broadview Ave. Toronto, Ontario, M4M 2G1

Christine Mulligan - Director of Sales

[Cmulligan@thebroadviewhotel.ca](mailto:Cmulligan@thebroadviewhotel.ca)

(416) 469-8607

Holiday Inn Express Downtown (5 minute drive)

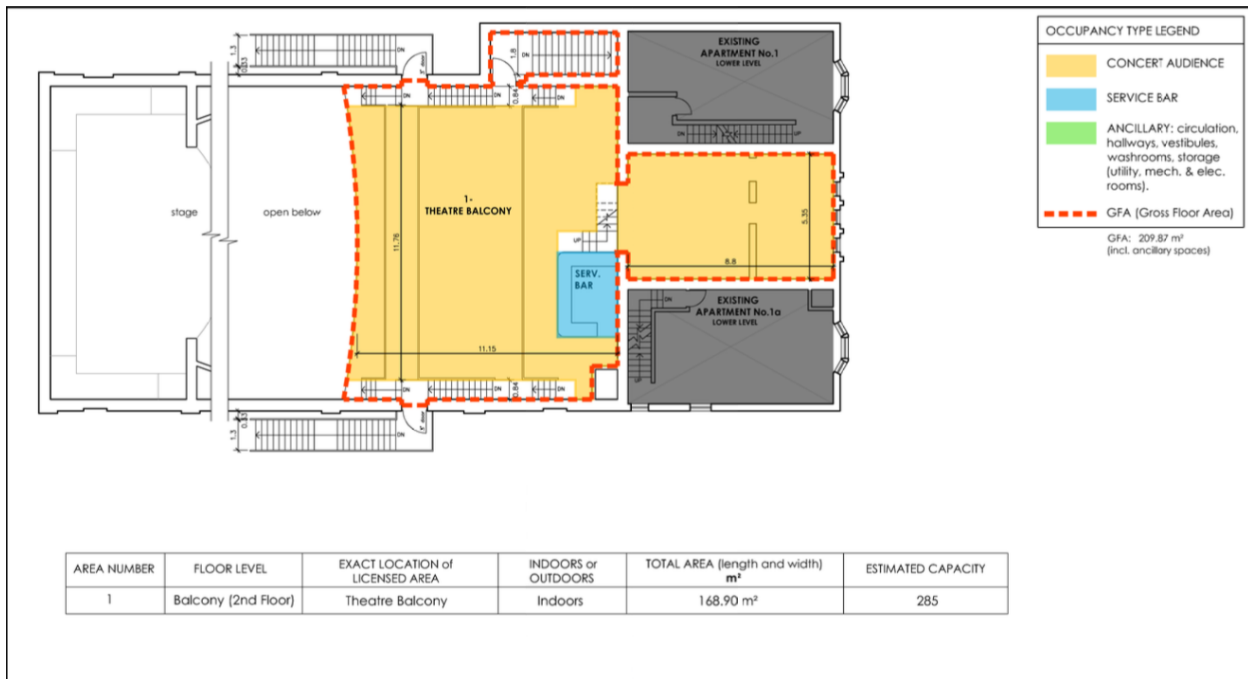
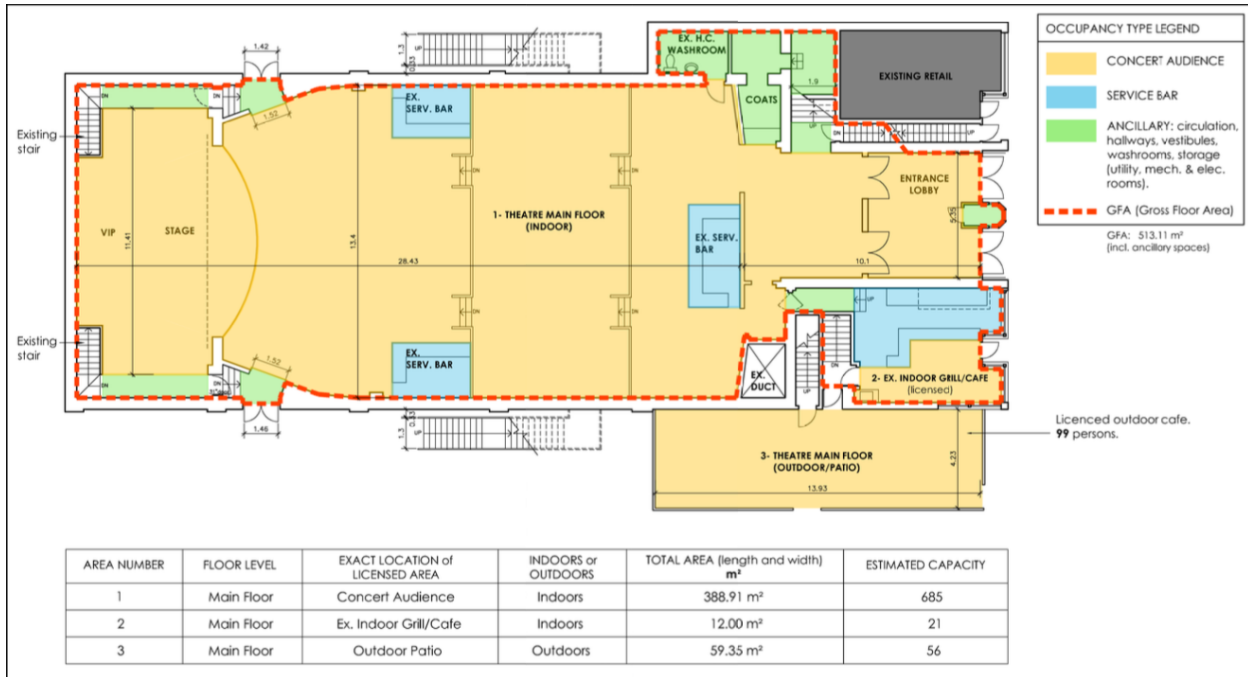
111 Lombard St. Toronto, Ontario, M5C 2T9

[whg4104s@whg.com](mailto:whg4104s@whg.com)

(416) 367-5555

**\*\*\* Please mention The Opera House to receive preferred rates \*\*\***

# FLOOR PLANS



# IMMIGRATION

This venue is **EXEMPT** from any border fees

From: Ralph Thornton Centre To: athena Date: 9/6/02 Time: 2:15:00 PM Page 1 of 1  
SEP-06-2002 FRI 02:39 PM FROM: THE OPERA HOUSE FAX: 416 466 0917 PAGE 1  
AUG 20 2002 1:56 PM FR GCC HR DEV. CANADA S54 3127 TO 84164660917 P.02

 Human Resources Development Canada Développement des ressources humaines Canada

August 19, 2002

The Opera House  
735 Queen Street East  
Toronto, Ontario  
M4M 1H1

Attention: Athena Towers

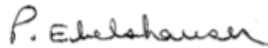
Dear Ms. Towers:

This letter is in regards to bands/groups performing at the Opera House in Toronto.

In my opinion, as the venue is not a bar, restaurant or club, no confirmation is needed for performance at the Opera House. The performers should be exempt from confirmation under 186(g) under the Immigration Act and Regulations.

Please provide a copy of this letter to each band/group performing at the Opera House. I would suggest the foreign workers take a copy of this letter to the appropriate Immigration authorities. Please remember that the foreign workers may still need an Employment Authorization and any other visas required by Immigration.

Yours truly,



Pat Ebelshausen  
Human Resources Development Canada  
25 St. Clair Avenue East  
Toronto, Ontario  
M4T 1M2

Canada