

# The Opera House - Toronto

735 Queen St. East, Toronto, Ontario, Canada

TheOperaHouseToronto.com

## INDEX

1. Index
2. General Info
3. Parking
4. Maps
5. Audio
6. Lighting
7. Lighting Patch
8. Rigging/Power/Video
9. Accommodations/Venue Info
10. Stage Dimensions
11. Floor Plans
12. Immigration



## GENERAL INFO

### Venue Contact:

Athena Ellinas-Towers (Booker/Venue Manager)

Phone: (416) 466-0313 ext: 2

Email: [athena@theoperahousetoronto.com](mailto:athena@theoperahousetoronto.com)

Fax: (416) 466-0917

### Capacity:

Total Capacity - 1072

Sellable Capacity - 900

Main Floor Standing - 660

Balcony Seated/Standing - 285

Dressing Rooms - 42

Restaurant - 25

Patio - 60

### Wifi:

For inside the club

Network: Appletest

Password: letmein1234567890

On the bus/patio

Network: The Opera House Grill

Password: bestpassword

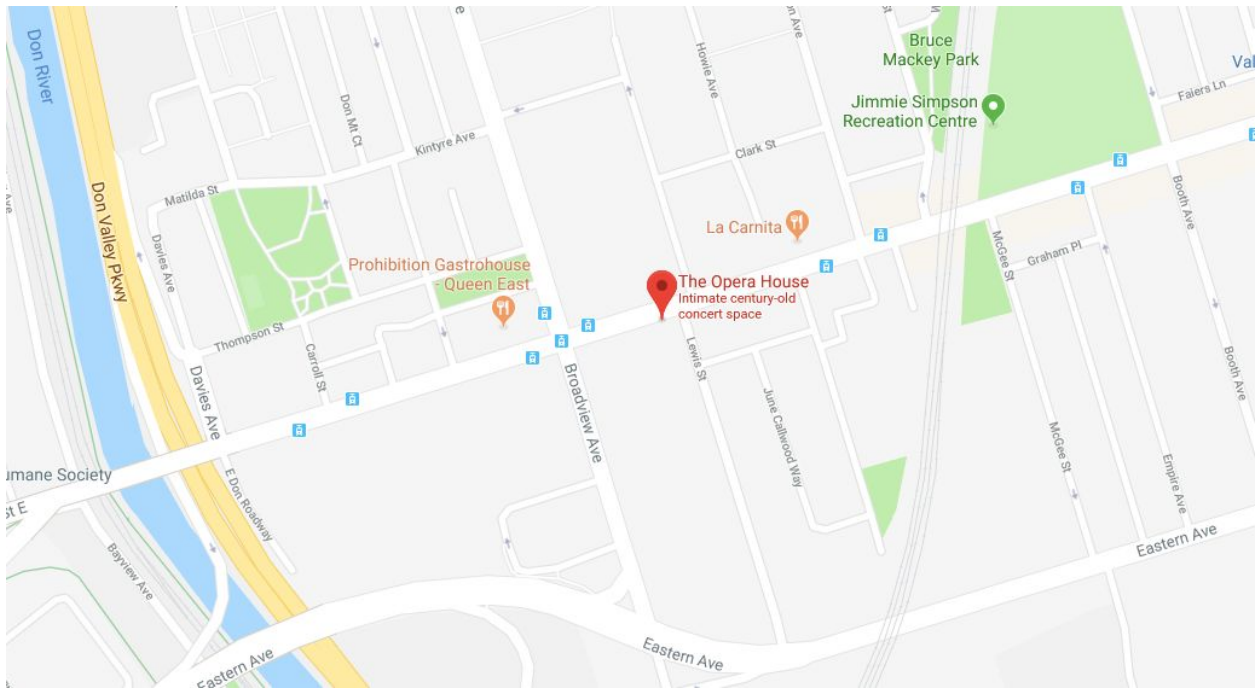
## PARKING

Parking for buses/trailers is on the West side of Lewis St directly next to the club. We can accommodate 2 buses with trailers nose to nose within our allotted space (maps on next page). Lewis is a one way street running North. Access to it can be made from Eastern Ave or through an alley off Saulter St (1 block East) if you're in a smaller vehicle.

We can also accommodate 3 smaller vehicles on the concrete landing pad. We have 2 connections for shore power (50 amp single phase) and buses are required to run off it. We're in a residential neighbourhood and aren't allowed to be running generators all night.







## AUDIO

### PA:

Adamson Y-10 Line array (ground stacked)  
 8 Adamson Y-10 tops (4 per side) running off QSC RMX 2450 amps  
 6 Adamson Y-10 subs (3 per side) running off QSC RMX 4050 amps  
 2 Adamson P8 Infill speakers running off a QSC RMX 1450 amp  
 2 Adamson LX10 Delay speakers running off a QSC RMX 1450 amp

### FOH:

Avid SC48 or Midas Heritage 1000 w/ outboard rack  
 40 channel Clair copper veam split snake  
 12 channel return

### MON:

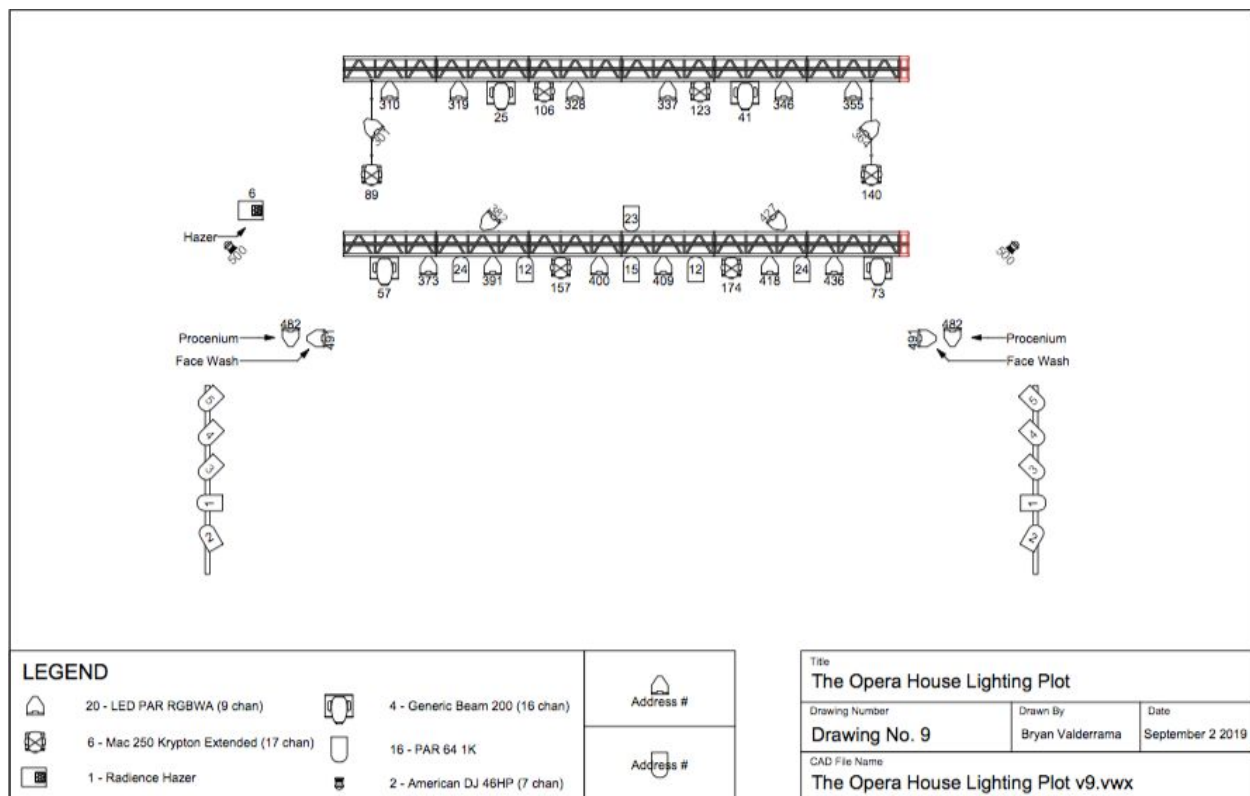
Avid SC48  
 DBX Driverack control system with remote  
 12 Crest CA-9 amps (8 for monitor mixes and 4 for sidefills)  
 8 WNSS 212 Bi-Amped concert series monitors  
 2 WNSS WS-5 4 way side fill monitors

### MICS:

1x Shure Beta 91	Mic kit changes, these are
2x Shure Beta 52	all constants though. 15+
5x Shure Beta 56	active and passive DI's
8x Shure SM 58	as well
9x Shure SM 57	
5x Shure SM 94	2x Shure BLX Wireless Mics
1x Shure SM 81	*Addition charge for wireless
2x Sennheiser MD 421	
2x Sennheiser E609	
3x Audio Technica ATM 25	

# LIGHTING

Jands Vista S3 console at FOH  
 20 RGBAW 15 Watt LED Par Cans  
 10 Par 64 1000 Watt Par Cans (Front wash/Audience)  
 4 200 Watt Beam Movers  
 6 Martin Mac 250 Kryptons  
 1 Strand Lighting 30x2.4kW dimmer rack  
 2 Ultratec Radiance Hazers  
 3 Copper DMX runs to stage (2 for house rig, 1 for guest)



Fixture	DMX Channels	Address	Universe	Position
PAR64	1	1	2	Audience
PAR64	1	2	2	Balcony
PAR64	1	3	2	Front Wash
PAR64	1	4	2	Front Wash
PAR64	1	5	2	Front Wash
Radiance Hazer	2	6	2	Hazer
PAR64	1	12	2	Inside Blinders
PAR64	1	15	2	CTR
PAR64	1	23	2	Mirror Ball
PAR64	1	24	2	Ouside Blinders
SC 38572 5R Beam	16	25	2	US Truss
SC 38572 5R Beam	16	41	2	US Truss
SC 38572 5R Beam	16	57	2	DS Truss
SC 38572 5R Beam	16	73	2	DS Truss
Mac 250 Krypton Extended	17	89	2	US Truss
Mac 250 Krypton Extended	17	106	2	US Truss
Mac 250 Krypton Extended	17	123	2	US Truss
Mac 250 Krypton Extended	17	140	2	US Truss
Mac 250 Krypton Extended	17	157	2	DS Truss
Mac 250 Krypton Extended	17	174	2	DS Truss
IRGBWAS LED PAR	9	301	2	US Truss
IRGBWAS LED PAR	9	310	2	US Truss
IRGBWAS LED PAR	9	319	2	US Truss
IRGBWAS LED PAR	9	328	2	US Truss
IRGBWAS LED PAR	9	337	2	US Truss
IRGBWAS LED PAR	9	346	2	US Truss
IRGBWAS LED PAR	9	355	2	US Truss
IRGBWAS LED PAR	9	364	2	US Truss
IRGBWAS LED PAR	9	373	2	DS Truss
IRGBWAS LED PAR	9	382	2	DS Truss
IRGBWAS LED PAR	9	391	2	DS Truss
IRGBWAS LED PAR	9	400	2	DS Truss
IRGBWAS LED PAR	9	409	2	DS Truss
IRGBWAS LED PAR	9	418	2	DS Truss
IRGBWAS LED PAR	9	427	2	DS Truss
IRGBWAS LED PAR	9	436	2	DS Truss
IRGBWAS LED PAR	9	482	2	Proscenium
IRGBWAS LED PAR	9	491	2	Face Light
American DJ 46 HP	7	500	2	Windows

- LED PARS = Prosenium and Facelight are ganged

- **GRAND MA USERS:** LED PAR Profile is: Generic IRGBWAS 7ch.

- Our patch is spaced 9 channels, you will have to space 7 channels manual

#### **Patch Cheat Sheet:**

- LED PAR = 18 - Beam 200 = 4 - Mac250 Krypton Extended = 6 - Dimmer = 7

## RIGGING

- 4 Tour Rig ⅓ Ton Motors
- 35ft of 20" A Truss Upstage
- 30ft of 20" A Truss Downstage
- 6 Fly pipes in fly gallery SL (only accessible to house staff)
- 1 30ft back drop bar flown from the USL corner of the stage
- 2 15ft house pipes on SL and SR walls
- 4 1 Ton Points Downstage of proscenium accessible with lift (not provided)

## POWER

- 1x 100 amp 3 phase cam lock SL for LX (guest power)
- 1x 100 amp 3 phase cam lock SL for Audio (guest power)
- 2x 50 amp single phase (shore power)
- 4x 15 amp U-Ground outlets USR (lighting power)
- 1x 100 amp 3 phase distro USL (audio stage power)

## VIDEO

- 1x 24x13.5ft Da-Lite fast fold screen flown on an upstage fly pipe
- 1x Christie LX650 projector (6500 ANSI Lumens)
- VGA or HDMI connection available at FOH
- (Additional charge for use of house video)

## BARRICADE

- 30ft available upon request
- House does not provide pit security (Additional charge for use of barricade)



## HOTELS/ACCOMMODATIONS

Preferred rates are available for out clients at...

Broadview Hotel (1 block west of venue)

106 Broadview Ave. Toronto, Ontario, M4M 2G1

Juliana Jimenez | Sales Manager

[jjimenez@thebroadviewhotel.ca](mailto:jjimenez@thebroadviewhotel.ca)

(416) 469-8607

Holiday Inn Express Downtown (5 minute drive)

111 Lombard St. Toronto, Ontario, M5C 2T9

[whg4104s@whg.com](mailto:whg4104s@whg.com)

(416) 367-5555

\*\*\* Please mention The Opera House to receive preferred rates

## VENUE INFO

Bars:

3 Located on the main floor and one balcony bar

This is a fully licensed venue.

Dressing Rooms:

2 Dressing rooms located under the stage

1 Shared washroom with shower

1 Production office (for tour use)

1 Make up room

Accessibility:

This is an accessible venue with specific seating areas available and with a main floor accessible washroom

## STAGE

Stage width (wing to wing) - 44ft

Stage height - 4.5ft

Width of proscenium - 27ft

Height of proscenium - 18.2ft

Depth to stage skirt - 23ft

Height to stage ceiling - 50ft

Height to fly grid - 40ft

Steel ramp to stage - 2.3ft

Stage skirt to FOH - 35ft

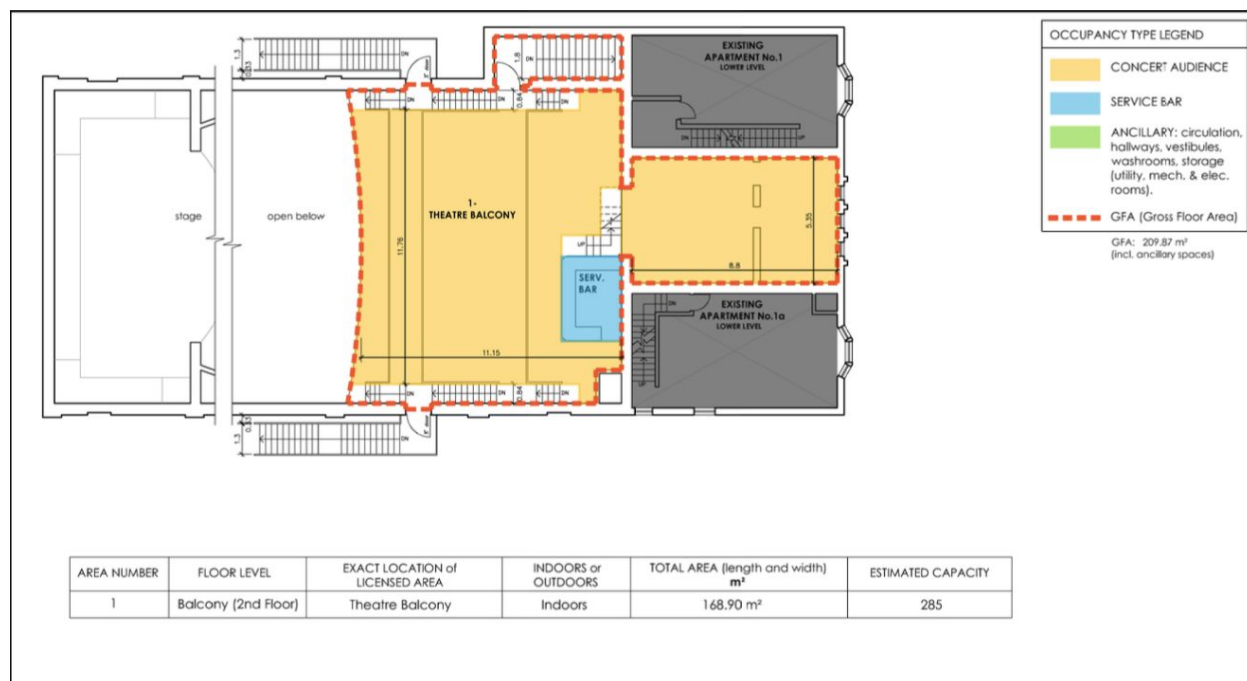
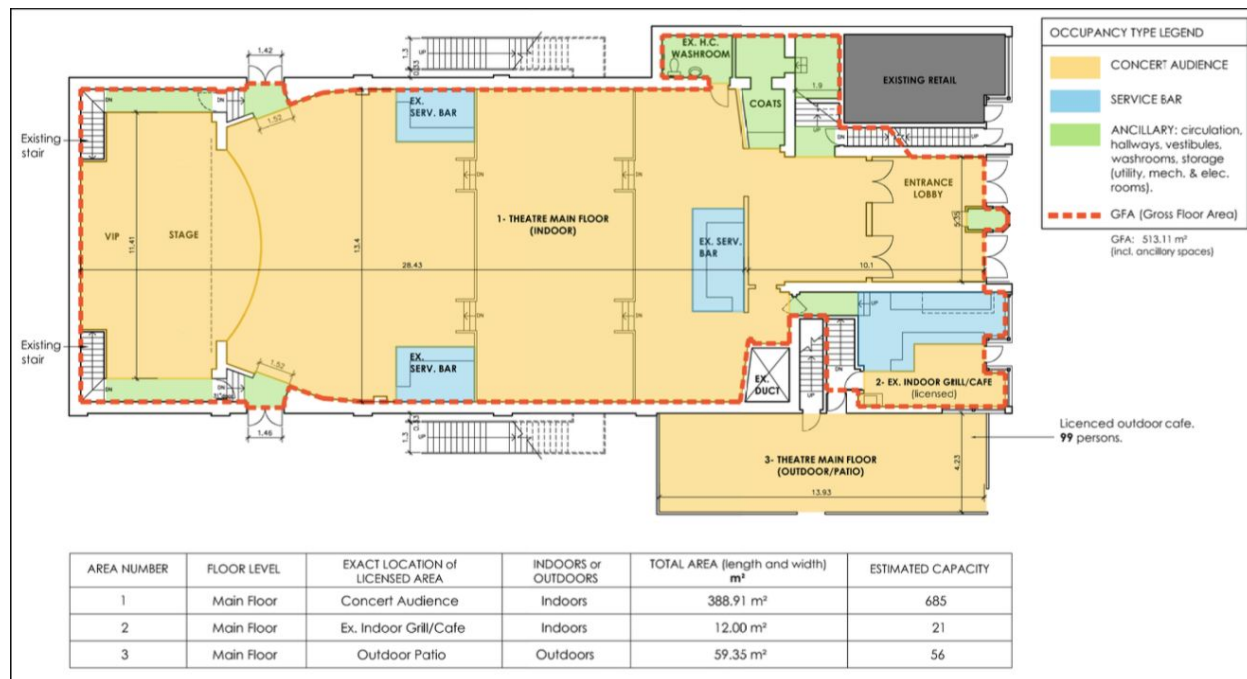
Stage skirt to back of house - 70ft

Ceiling height - 30ft

Room width - 45ft



# FLOOR PLANS



# IMMIGRATION

This venue is **EXEMPT** from any border fees

From: Ralph Thornton Centre To: athena Date: 9/5/02 Time: 2:15:00 PM Page 1 of 1  
 SEP-06-2002 FRI 02:39 PM FROM: THE OPERA HOUSE FAX: 416 466 0917 PAGE 1  
 AUG 20 2002 1:55 PM FR GCC HR DEV. CANADA S54 3127 TO 94164662917 P.02

 Human Resources Development Canada Développement des ressources humaines Canada

August 19, 2002

The Opera House  
 735 Queen Street East  
 Toronto, Ontario  
 M4M 1H1

Attention: Athena Towers

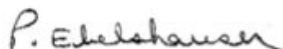
Dear Ms. Towers:

This letter is in regards to bands/groups performing at the Opera House in Toronto.

In my opinion, as the venue is not a bar, restaurant or club, no confirmation is needed for performance at the Opera House. The performers should be exempt from confirmation under 186(g) under the Immigration Act and Regulations.

Please provide a copy of this letter to each band/group performing at the Opera House. I would suggest the foreign workers take a copy of this letter to the appropriate Immigration authorities. Please remember that the foreign workers may still need an Employment Authorization and any other visas required by Immigration.

Yours truly,



Pat Ebelshauser  
 Human Resources Development Canada  
 25 St. Clair Avenue East  
 Toronto, Ontario  
 M4T 1M2

**Canada**